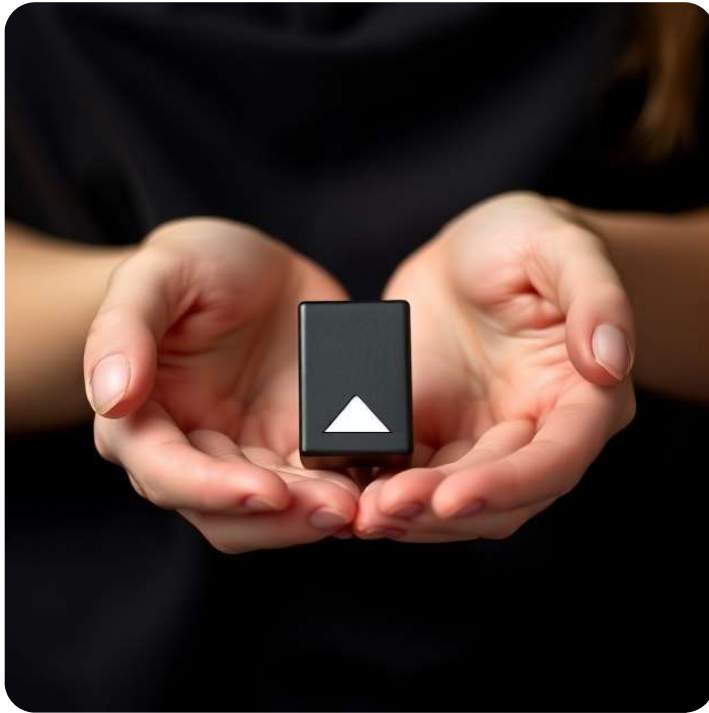


# SPECCY

## Mini Spectral Sensor



Designed for accurate visible light dosimetry. SPECCY is a solution for monitoring light in various industries.

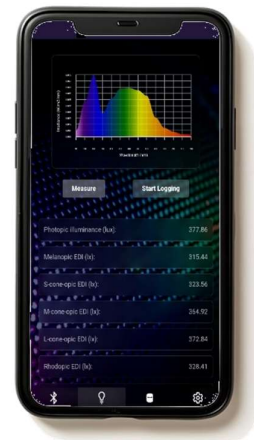


## KEY FEATURES

- Miniature Design
- Bluetooth connectivity for app integration
- Individual device calibration for industry-leading accuracy
- High dynamic range
- Automatic exposure control
- Excellent battery life and sample storage capacity
- Rechargeable battery via micro-USB
- Pendant form for wearability

## MULTIPURPOSE INSTRUMENT

- Accurate and Affordable: Individually calibrated for accuracy comparable to industry equipment.
- Portable and Wearable: Miniaturised form factor and optional pendant design for easy carrying and wearing.
- IoT Enabled: Allows remote monitoring and data logging for researchers studying the circadian cycle, smart buildings, light monitoring.
- App Connectivity: Connects to a WebApp for real-time data visualisation and control.



**PhotoSpec Labs**  
www.photospeclabs.com

Factory One, 21-29 Railway Avenue  
Oakleigh, Vic, 3166, Australia  
Tel: +61 3 9568 1879  
info@photospeclabs.com



## SPECIFICATIONS

<b>Spectral Range</b>	VIS (380-780 nm)
<b>Dimensions</b>	45 mm x 20 mm x 15 mm
<b>Weight</b>	20 g
<b>Battery Life</b>	3 days (1 measurement per min)
<b>Memory</b>	Up to 131,000 samples
<b>Interface</b>	Bluetooth LTE (ask for our WiFi option)
<b>Charging Interface</b>	Micro USB
<b>Sensor Type</b>	18-sensor array
<b>Operating Temperature</b>	0°C – 45°C

